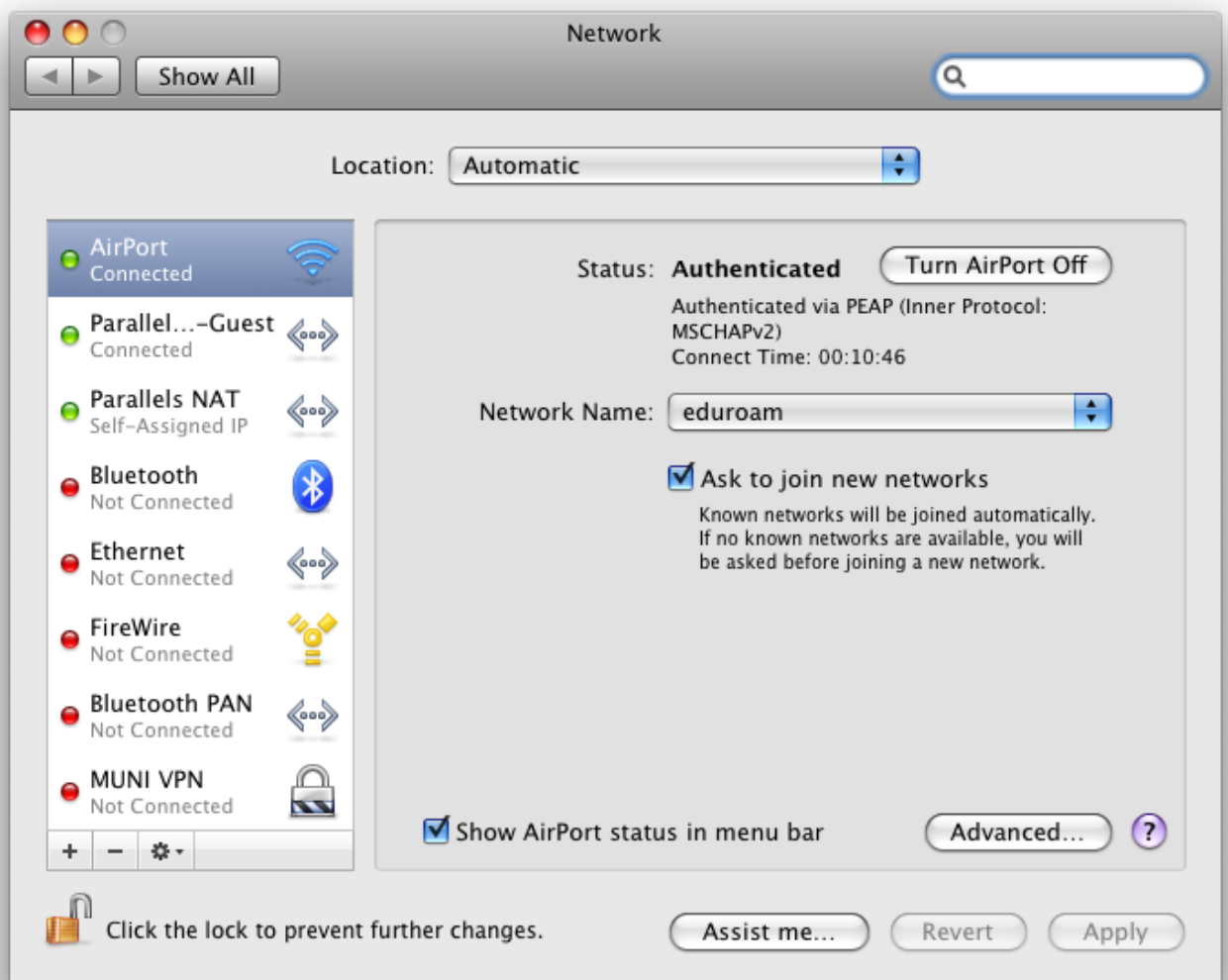
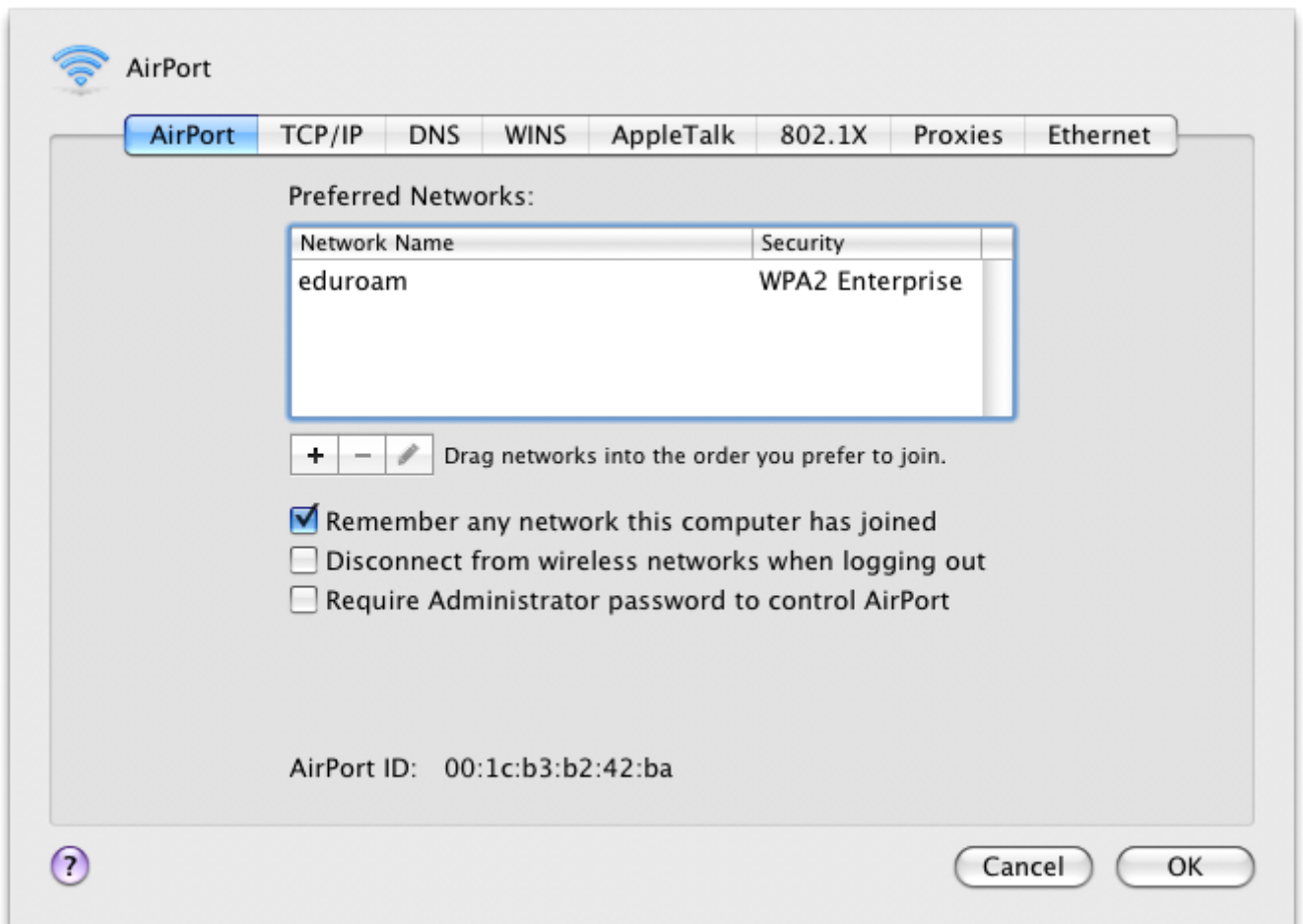


How to connect to eduroam with Mac OS X 10.5

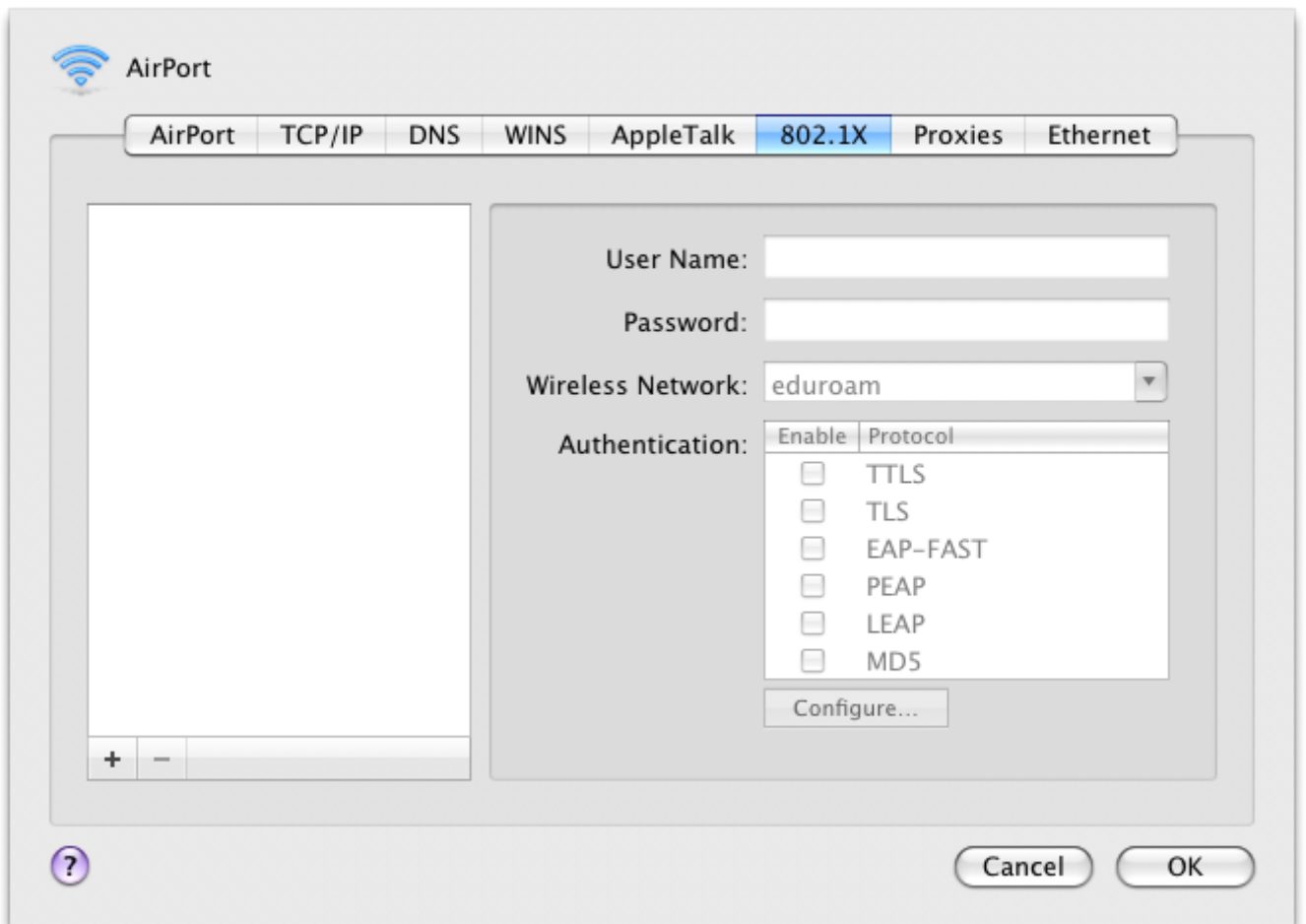
1. Open **System Preferences**
2. Open **Network** (or you can click on a symbol of WiFi network on top panel)
3. Select setting **Airport**
4. Select **Advanced**



- Select network *eduroam*

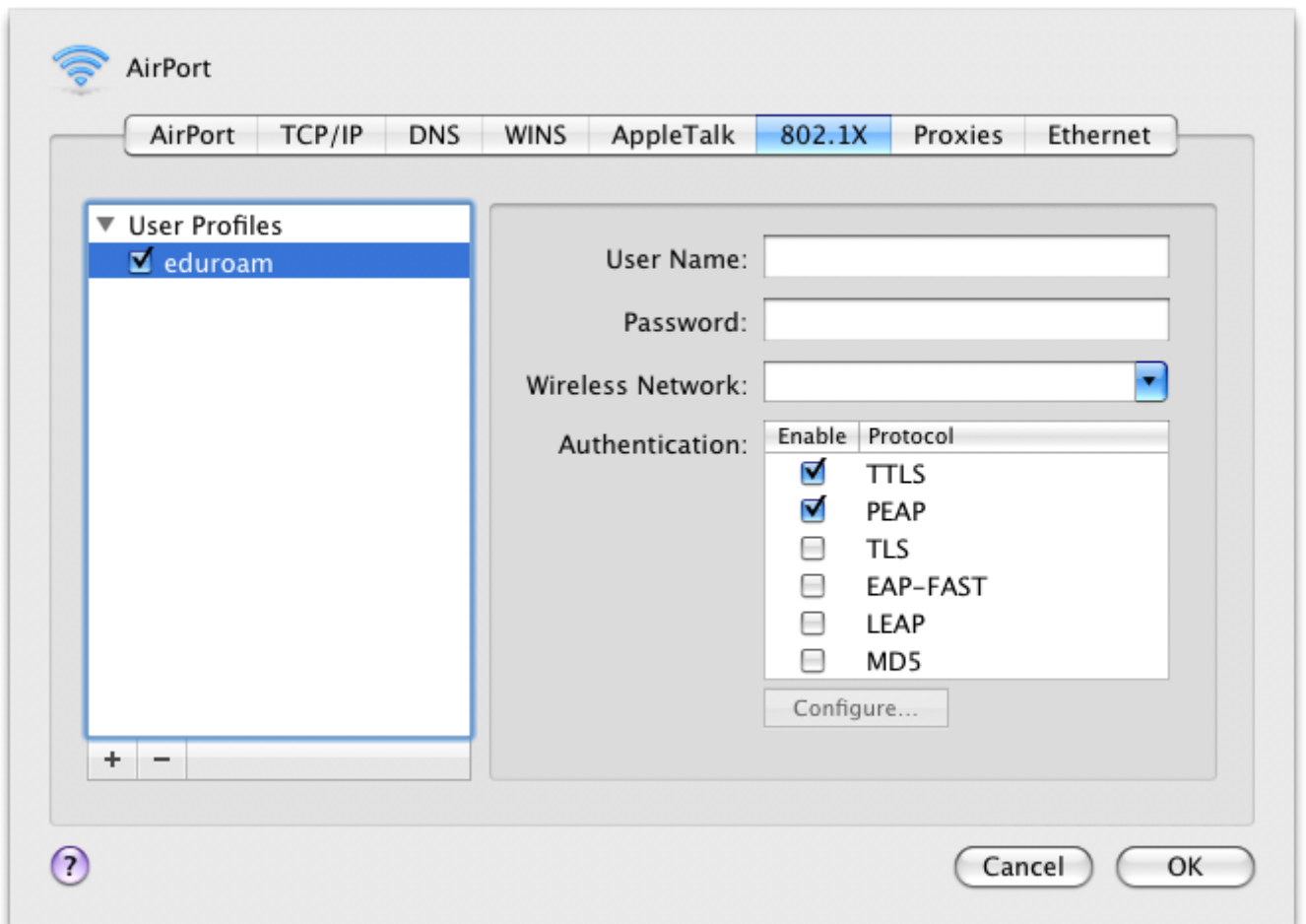


- Switch to **802.1X**

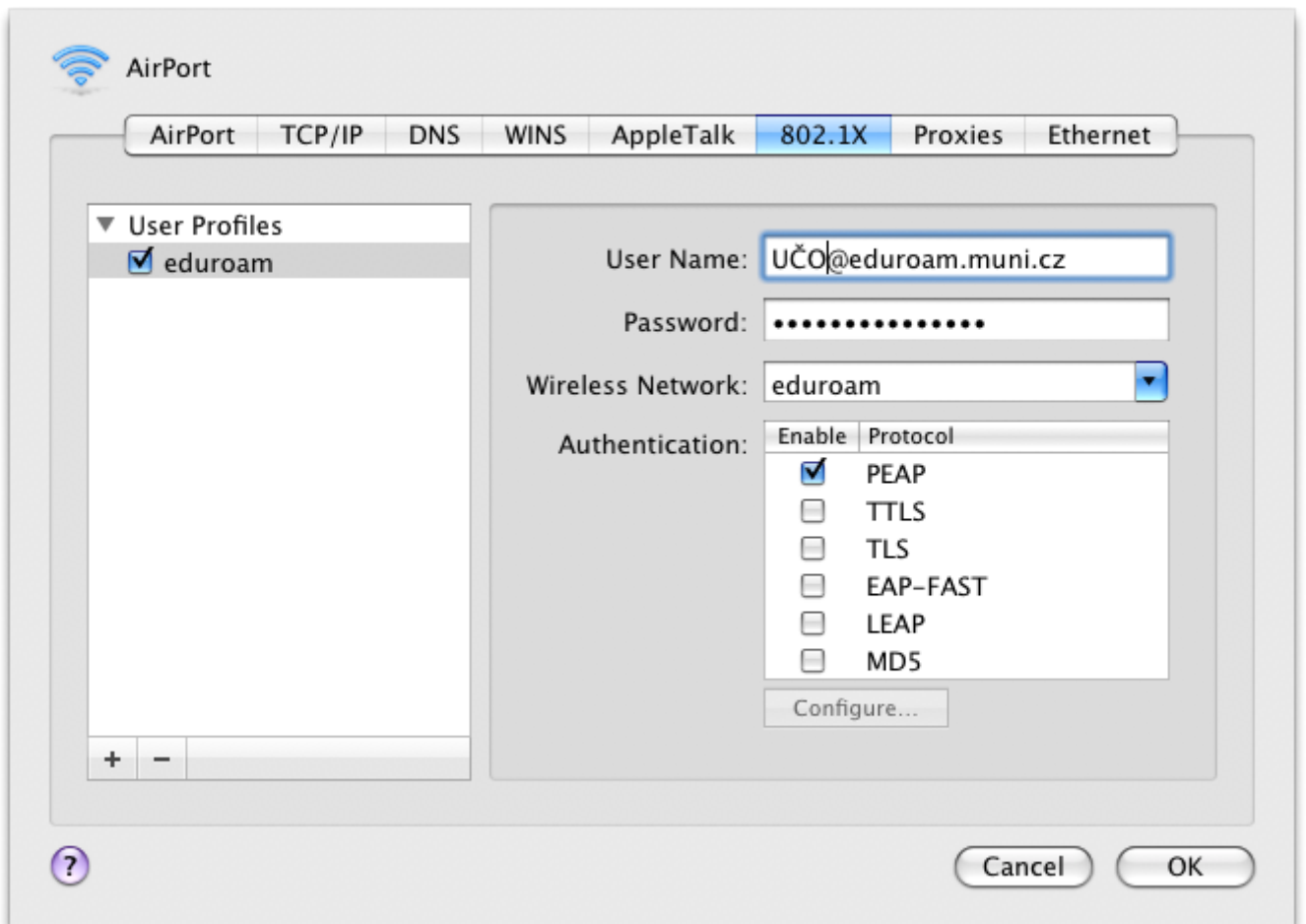


- Add User Profile in **802.1X**

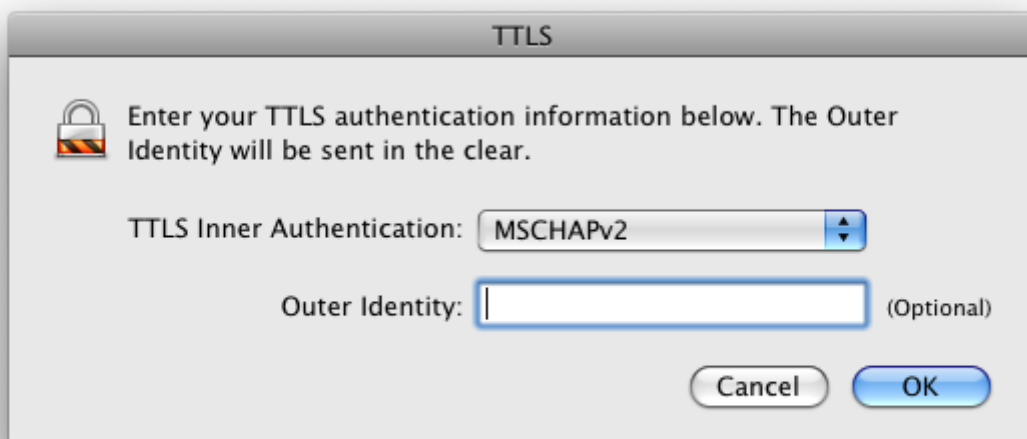




- Fill the **User Name** with *UČO@eduroam.muni.cz*
- Fill **Password** with your [secondary password](#)
- Select only **PEAP** in **Authentication**



- In menu **Configure** select TTLS inner authentication protocol MSCHAPv2



- Now close configuration and connect...